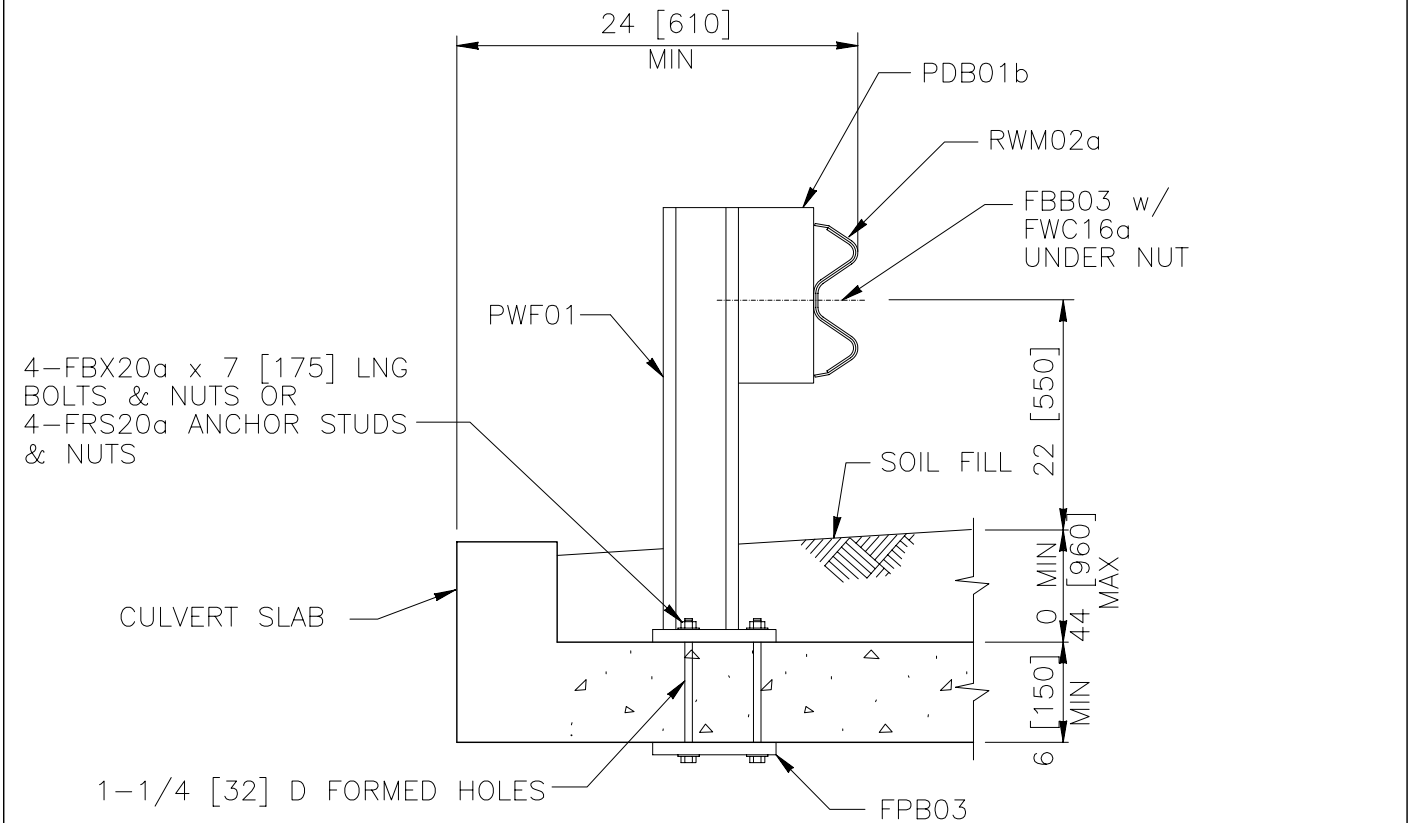


ELEVATION



SECTION

CULVERT MOUNTED W-BEAM GUARDRAIL

SGR05

SHEET NO.	DATE:
1 of 2	8/04/2005

INTENDED USE

The culvert-mounted W-beam guardrail is often used to cross box culverts or other small structures that interrupt a length of soil-mounted SGR04 guardrail. This is a Test Level 3 barrier.

COMPONENTS

Unit length = 150 inches [3810 mm]

Designator	Component	Number
FBB01	Splice bolt and nut	8
FBB03	Post-blockout bolt and nut	2
FBX20a	Anchor bolt (7 inches [175 mm]) and nut	8
or FRS20a	Anchor stud and nut	8
FPB03	Bearing plate	2
FWC16a	Round washer	2
FWC20a	Anchor bolt washer	16
PDB01b	Steel guardrail blockout	2
PWF01	Deck-mounted steel guardrail post	2
RWB01a	W-beam backup plate	1
RWM02a	W-beam rail	1

APPROVALS

This system is a variation of SGR04, which is included in FHWA Acceptance Letter [B-64](#).

REFERENCES

T.J. Hirsch and D. Beggs, "Use of Guardrails on low-fill bridge-length culverts," in *Roadside Safety Features*, Transportation Research Record 1198, National Research Council, Washington, DC, 1980.

CONTACT INFORMATION

Federal Highway Administration
Office of Safety
400 Seventh Street, SW
Washington, DC 20590
202-366-2288



CULVERT-MOUNTED W-BEAM GUARDRAIL

SGR05

SHEET NO.

DATE

2 of 2

8/04/05